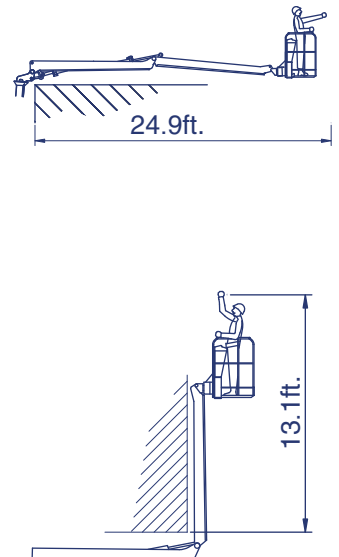
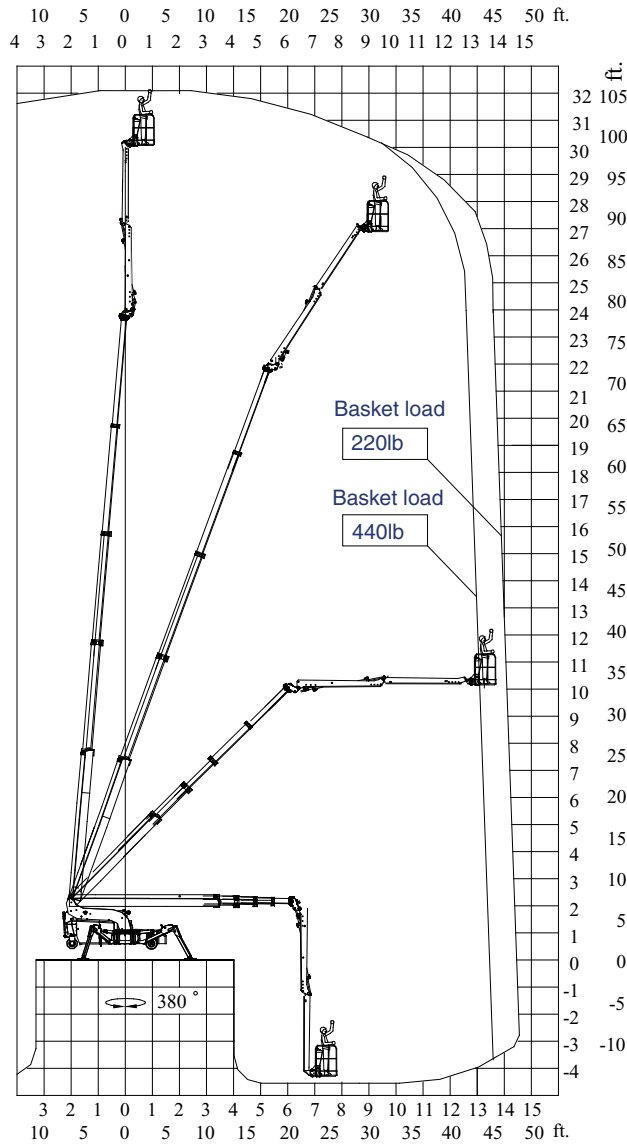
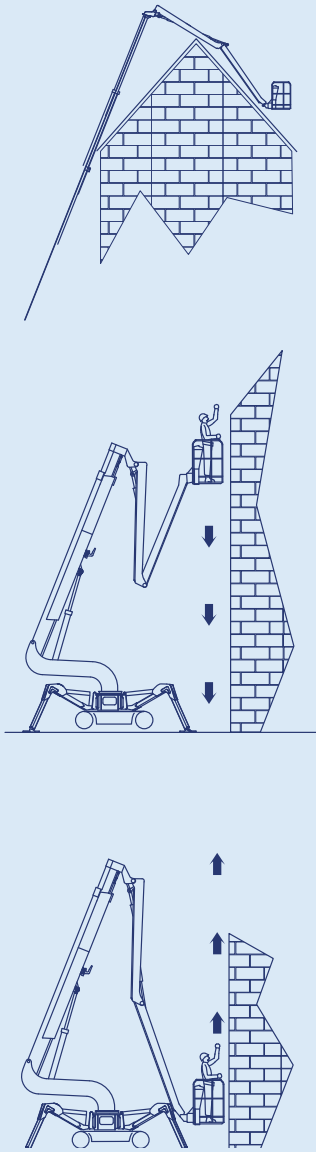


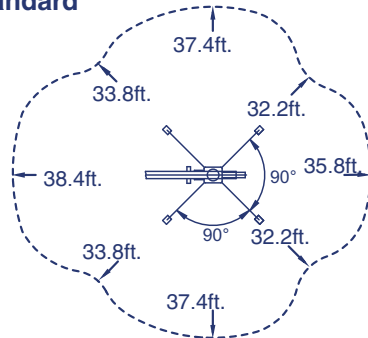
ReachMaster Falcon FS105

Reach diagram — Optimized position



Reach with outriggers in different positions

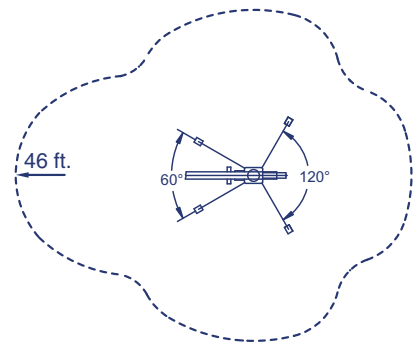
Standard



Basket load = 440lb

Measurements in feet

Optimized



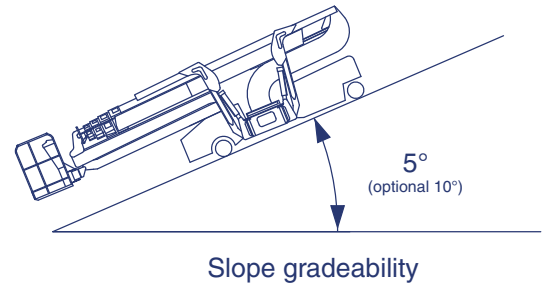
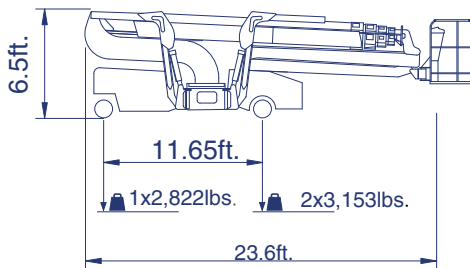
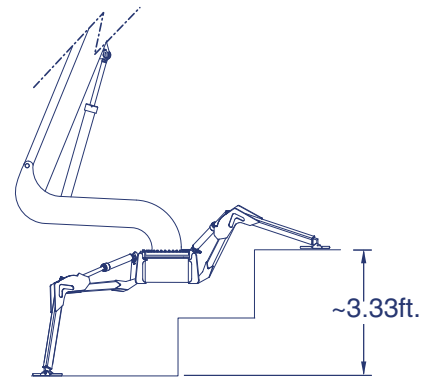
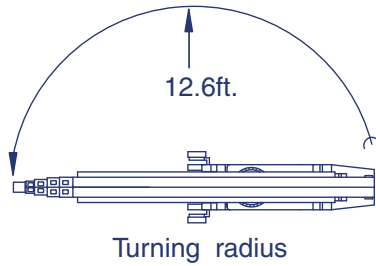
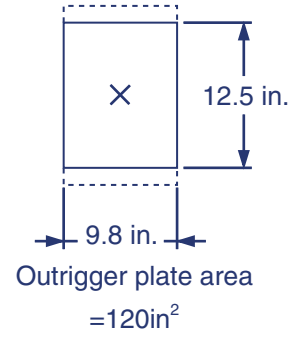
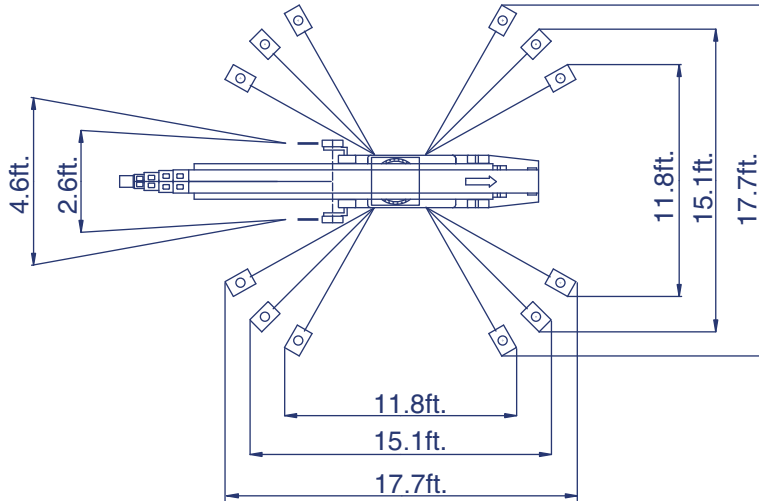
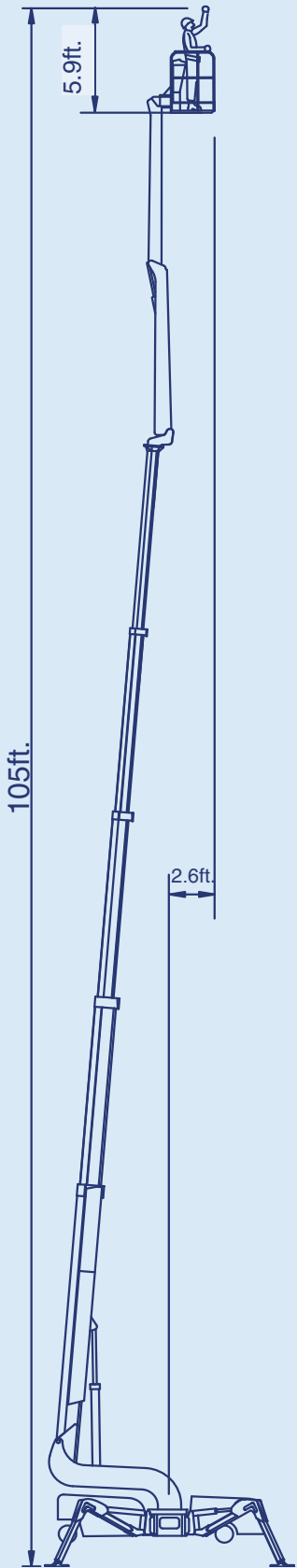
Basket load = 220lb

ReachMaster Inc.
1416D Stonehollow Drive
Kingwood TX77339
USA
Tel.: 281-358-7088
Fax: 281-359-3500
Toll-free: 1-866-358-7088

usa@reachmaster.com
www.reachmaster.com

All measurements are intended as guide. Choice of equipment may change the mentioned measurements





Additional info:

Weight and ground pressure:

Weight with standard equipment	9,127 lbs
Max. ground pressure under 1 wheel	133.8 psi
Max. ground pressure under 1 outrigger plate	41.2 psi
Front wheel area (depending on wheel type)	1 x approx. 26.4 in ²
Rear wheel area (depending on wheel type)	2 x approx. 27.7 in ²

As all our products are in a constant process of development we reserve the right to alterations



ReachMaster

Technical data for FS105

Max basket load	440 lb (2 persons of 87 lb + 66 lb. extra equipment)
Telescopic functions	
Boom stages:	4
Telescopic stroke:	52.5 ft. (Approx.)
Main boom	
Movement:	88° (-3° to + 85°)
Turret	
Rotation:	380° (standard).
Rotations system:	Hydraulic motor, planetary gear.
Jib	
Length:	9.8 ft.
Rotations angle:	180°
Basket Jib	
Length:	9.8 ft.
Rotations angle:	180°
Basket	
Rotations angle:	2 x 90° (available as optional)
Outriggers	
Adjustment:	Manually horizontally
Setting:	hydraulic cylinder jack
Option equipment:	Operating the platform from the basket
Track gauge:	Adjustable in 4 positions 2.6 ft. – 3.3 ft. - 3.9 ft. - 4.6 ft.
Loading/unloading truck	
Max. load height approx.	3.7 ft.
Max. load width approx.	9.8 ft.
Power supply	
	230V AC, 50/60 Hz, min.10 Amp. (Recommended 13 Amp.)
Power unit	
Standard:	24V DC motor
Option:	Hatz Diesel Engine
Option:	Honda Generator
Batteries	4 pcs. maintenance free batteries, (Option 4 - 8 extra pcs.)
	Type Dryfit Traction block 6-180 6V 180Ah (power unit)
	1 pcs. of maintenance free battery, VARTA 12V (Diesel engine)

Driving unit

Fast speed forwards	0.93 mile/h (Approx.)
Slow speed forward	0.56 mile/h (Approx.)
Fast speed reverse	0.93 mile/h (Approx.)
Slow speed reverse	0.56 mile/h (Approx.)
Max. gradient (standard):	Approx. 9%/5°
Max. gradient (Option):	With 2 wheel drive approx. 18%/10°

Self-propelled range:

Max distance reached by self-propelled platform, on battery power (fully charged) on level hard surface: 5905 ft.

Safety systems

Stability/overload:	Measurement of load/pressure on outriggers
Hydraulic safety:	Pilot check valve
Overload main boom protection:	Main boom deflection measurement
Slope alarm (Option):	Acoustic signal if chassi is out of level according to horizontal
Cross axis:	4°
Length axis:	8°

Chain fault:	Red indicator lights up at the control panels, if chain breaks or faults.
Emergency lowering:	Secondary electrical system and manual hand pump.

Emergency lowering.

Secondary electrical system and manual hand pump

REMARK

Data can have a deviation at each single platform due to production tolerances.

WARNING

Do not use the platform without reading and following the instructions carefully. Failing to comply with the correct operating procedures and safety instruction, can because for injury or death.

ALWAYS READ OPERATORS MANUAL BEFORE USE!